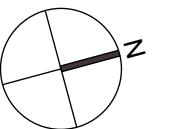
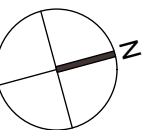
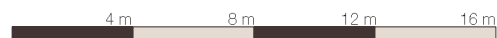
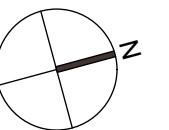


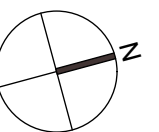
Lageplan | Geschosspläne | Wohnungsgrundrisse

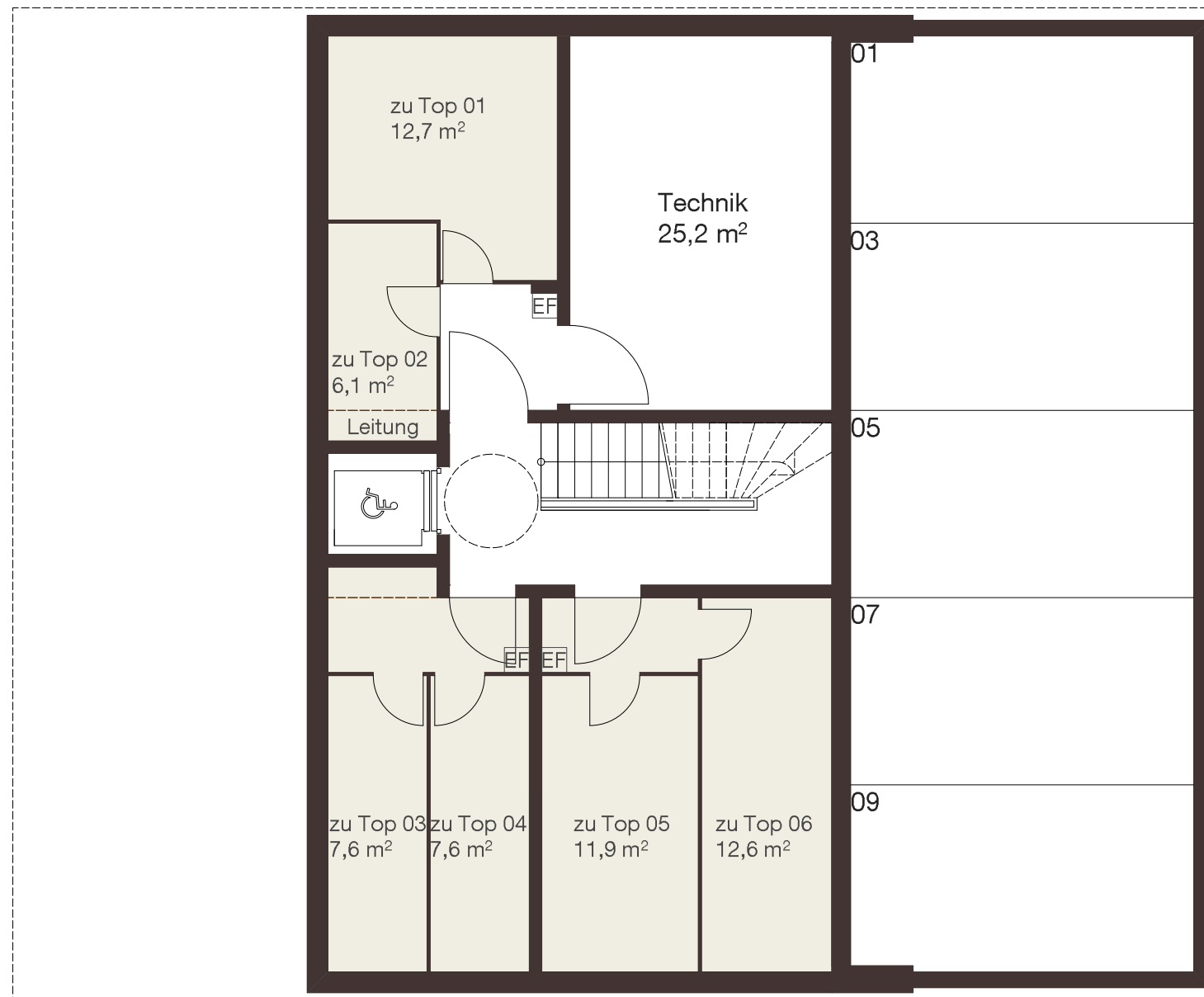




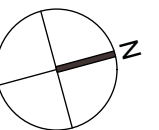




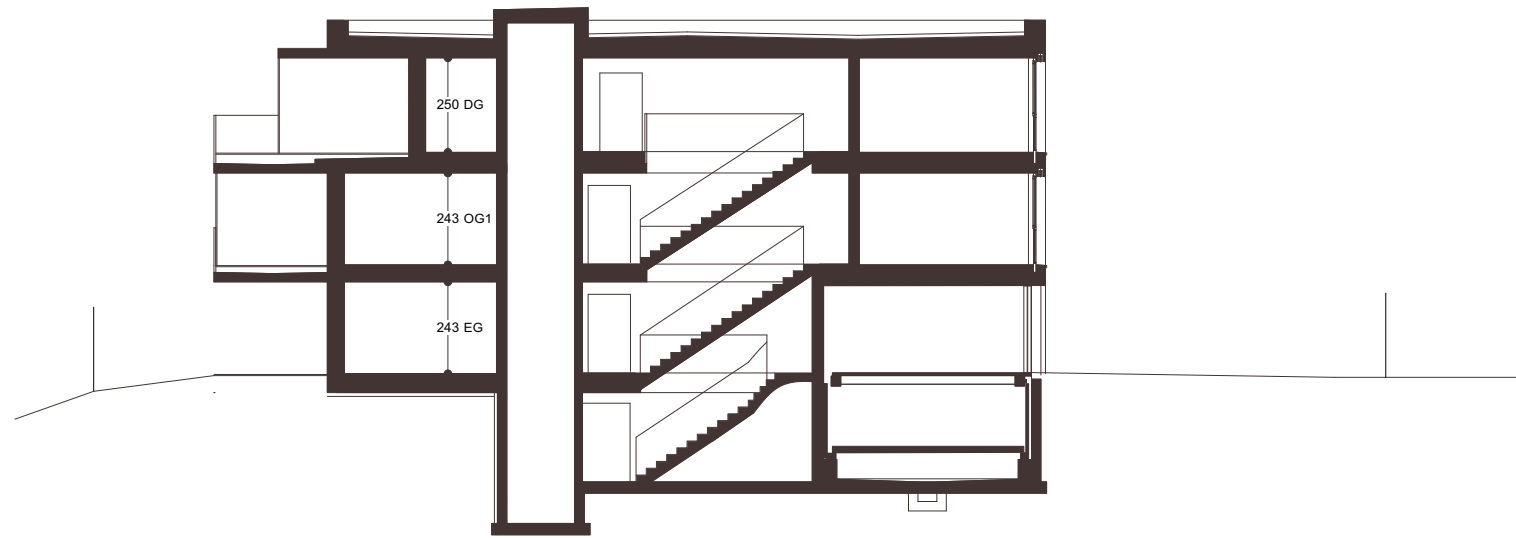




Anmerkungen Stapelparker:
max. zulässiges Fahrzeuggewicht = 2.600kg
max. zulässige Fahrzeughöhe = 210cm
max. zulässige Fahrzeuglänge = 500cm
Lichte Stellplatzbreite = 270cm



Schnitt A-A



Schnitt B-B

